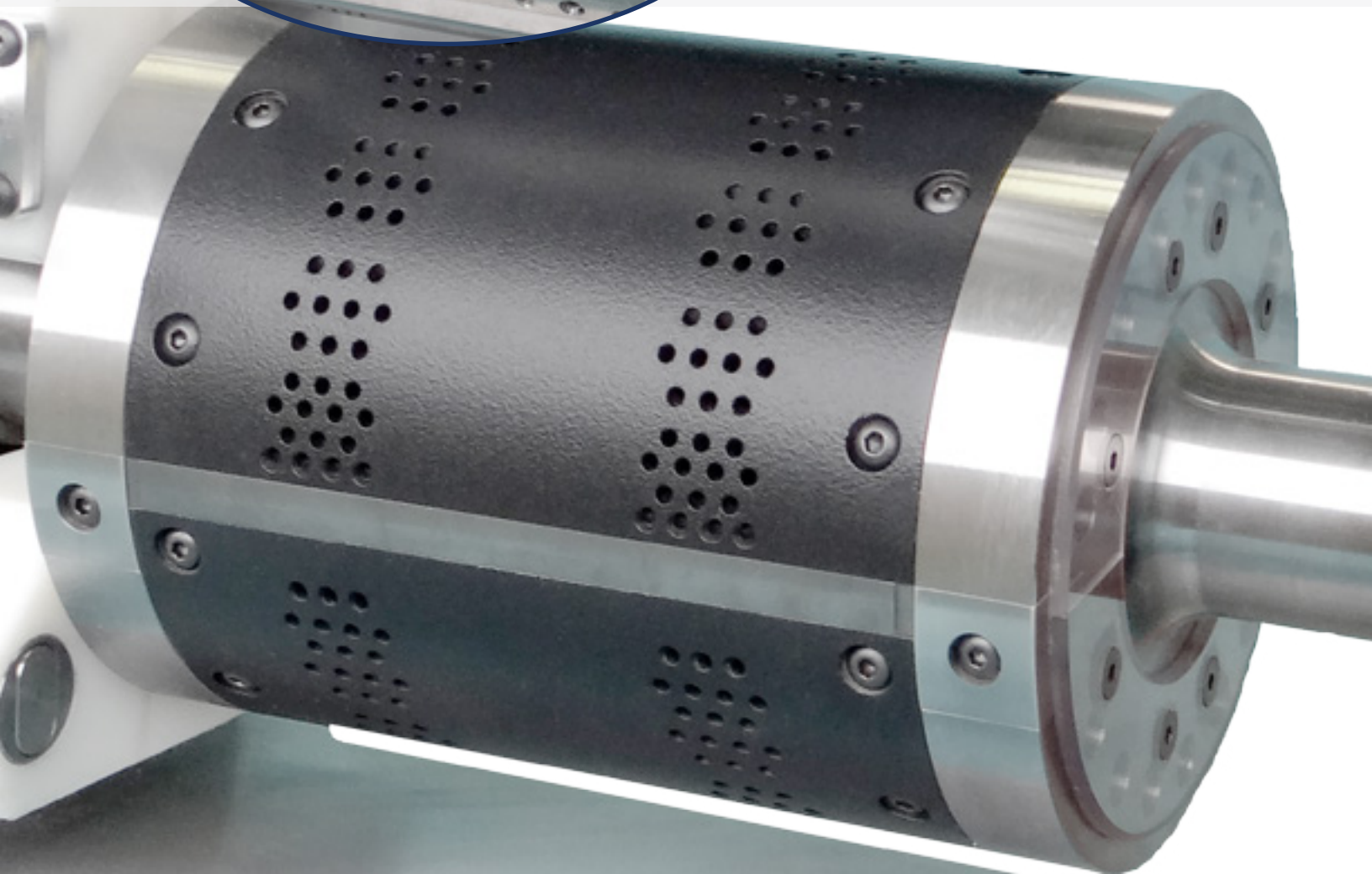
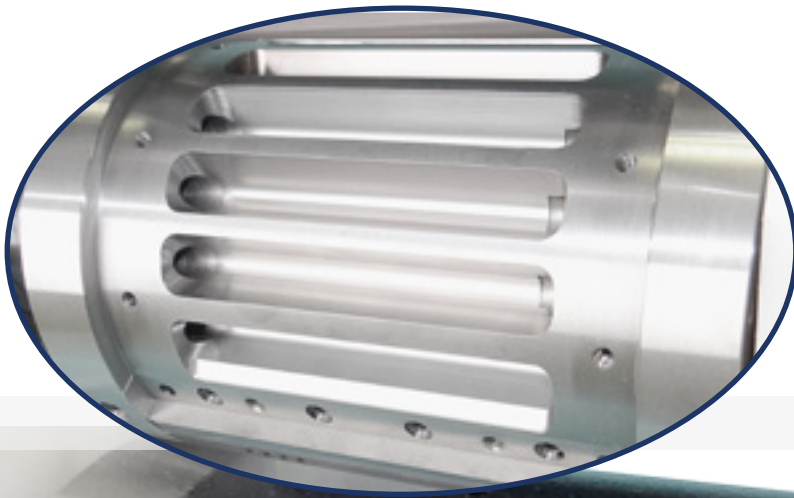




anvil rolls

customized to fit your application

Every specification, feature, tolerance,
focused on cutting performance.

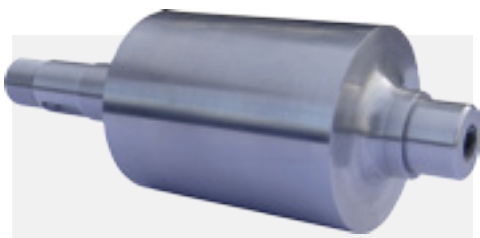


custom designed

insert & solid anvil rolls

manufactured to last longer

Presentation of the anvil surface is critical to performance and knife life; therefore, every specification, feature and tolerance of our anvil rolls is focused on cutting performance. Anvil rolls are machined and ground to demanding standards that keep your roll running true.



Solid Anvil Rolls

- Materials deliver superior toughness and fatigue strength over common tool steels.
- Heat treatment process optimized for your application and material selection.
- Through-hardened (not case-hardened) for longer life.
- Precision ground working surface.
- Precision ground bearing journals.



Solid Vacuum Anvil Rolls

- Available as complete rolls or a hub and shaft assembly
- Through-hardened, high performance material
- Precision ground surface
- Precision ground bearing journals



Insert Anvil Rolls

- Durable
- Corrosion Resistant
- Insert pockets precision ground to provide proper knife-anvil presentation
- Drop-in ready replaceable parts

