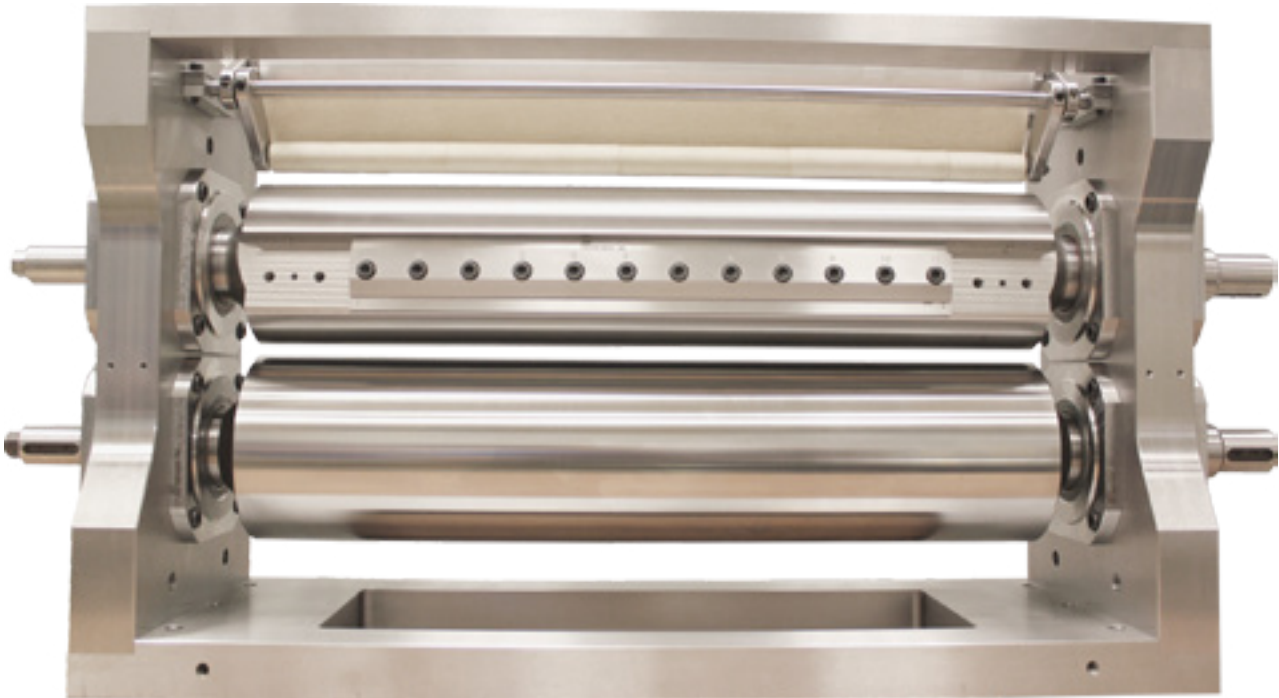


precision
cut modules
for converting machines



Featuring precision made...



knife rolls



anvil rolls



components

Everwear Cutting Modules

Precision Cutting for Converting Machines

What separates Everwear cutting modules from others?

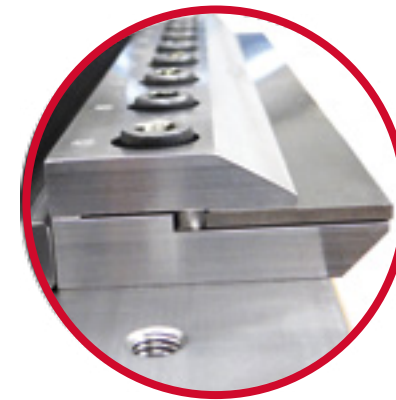
Precision Cutting Solutions focuses on reliability, speed, and productivity. Everwear cutting modules are *designed from the knife out*. This means every specification, material selection, and feature of an Everwear modules is created to optimize the performance of the knife. The result is *less downtime* for knife changes and adjustments, which equals *higher productivity*.

Machine Builders can elevate their converting machine's performance by including an Everwear cutting module in their design. Everwear's integrated design philosophy maximizes knife life, greatly *reducing costly downtime*. This gives customers who are looking for fast, reliable cutting everything needed for a low maintenance platform.

The perfect solution for **Producers** with *existing lines* who need to upgrade their performance is an Everwear cutting module. Whether the need is to replace outdated crush-cut technology or a new product requires a different module, Everwear will customize a cutting module to help *realize your production goals*.

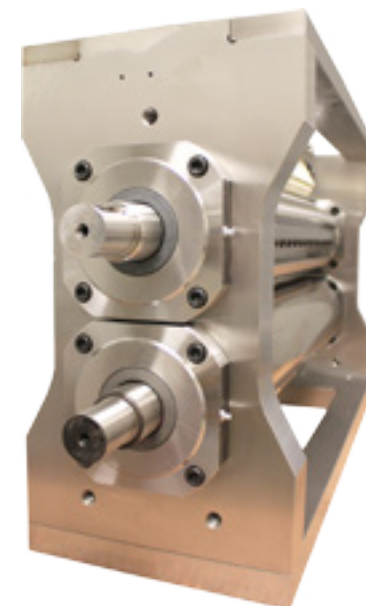
Precision & Performance Are Standard

Standard Features on all Everwear Cutting Modules



- High performance flex cutting with application specific material.
- Integrated design of knife and holding components.
- Precision ground components with design optimized for maximum knife life.

- Premium roll materials resist corrosion and absorb impact to increase knife life.
- Precision *ground* pockets flat within .001"/.025mm.



- Precision spherical roller bearings with hardened, high chrome housing standard on large and medium modules.
- Small modules use sealed bearings in precision machined and ground bearing blocks.
- Premium stainless frame material.
- Side frame bores positioned and straight within .004"/.010mm for precision knife-to-anvil presentation.
- Critical surfaces toleranced and perpendicular within .005"/.013mm.



everwear, inc.
Precision Cutting Solutions



Knife based design
ensures clean cuts.



Precision grinding to
demanding tolerances.

Sales & Engineering
ready for on-site support.



Expertise in use of
specialized materials.

Everwear, Inc. 401 Stag Industrial Blvd Lake Saint Louis, Missouri 63367 USA
636-625-1551 • 866-625-1551 • 636-625-1552 fax
karenh@everwear.com



www.everwear.com

